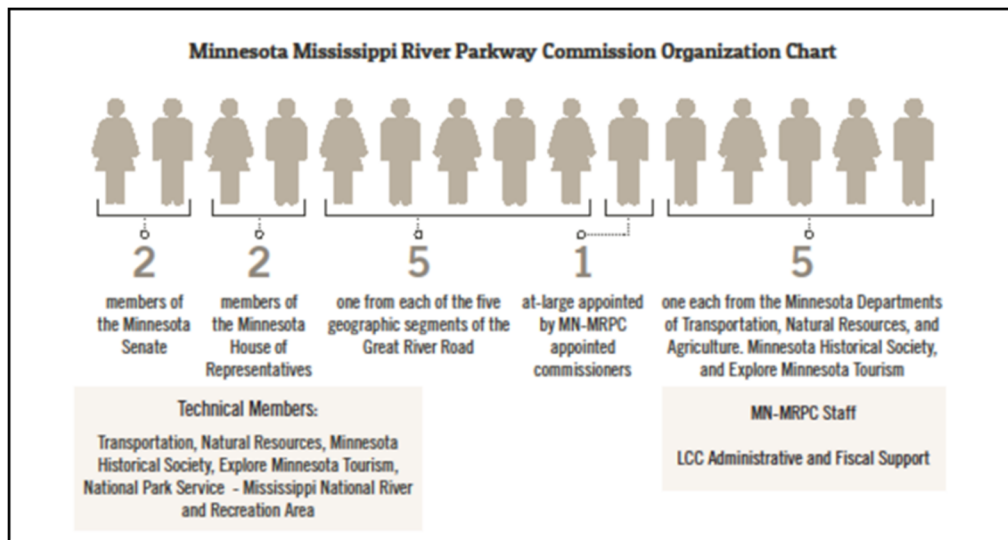




## **Minnesota Mississippi River Parkway Commission (MN-MRPC)**



- The MN-MRPC is organized and guided by [Minnesota Statute 161.1419](#)
- Mission: To preserve, promote and enhance the scenic, historic and recreational resources of the Mississippi River, to foster economic growth in the corridor, and to develop the national, scenic and historic byway known as the Great River Road.
- A Corridor Management Plan guides the work of the Commission. The full plan and supporting materials are available at <https://www.mnmississippiriver.com/about-us/management-plan/>
- The Minnesota Great River Road is designated and managed by the Minnesota Department of Transportation under [Minnesota Statute 161.142](#).
- Regular business meetings are held quarterly.
- Meeting dates, information and materials are available at <https://www.commissions.leg.state.mn.us/mrpc/mrpc.html>.
- Fiscal Agent: Minnesota Legislative Coordinating Commission.
- The MN-MRPC is funded by a state operating budgets and project grants at times.
- The MN-MRPC considers requests for actions or letters of support at its Quarterly Meetings. Details are available at <https://www.commissions.leg.state.mn.us/mrpc/pdf/MN-MRPCLtr-ActionProcess5-21>
- The MN-MRPC provides Great River Road information for the public, promotes the route and Mississippi River communities, and works with partners along the route.

### **MN-MRPC Commissioner Responsibilities**

- Enact the MN-MRPC mission and corridor management plan at National, State and local levels.
- Participate in four Minnesota meetings of the MN-MRPC annually.
- Participate in bi-annual National Mississippi River Parkway Commission meetings and serve on National Standing Committees.
- Actively support projects, promotions and special events related to the Mississippi River and/or Great River Road.

### **Additional Regional Commissioner Responsibilities:**

- Enable their regional stakeholders to maximize the benefits of the Great River Road.
- Act as link between the MRPC/MN-MRPC and the region.
- Foster partnerships and cooperation within the region, harnessing local resources to implement the mission and plan.
- Coordinate meetings as needed and lead implementation of work.

Minnesota Mississippi River Parkway Commission  
56 33<sup>rd</sup> Ave S, #283  
St. Cloud, MN 56301  
651-341-4196  
[info@mnmississippiriver.com](mailto:info@mnmississippiriver.com)  
[www.mnmississippiriver.com](http://www.mnmississippiriver.com)